



**Breville®**

*the InFizz™ Aqua*

BCA600

---

 Safety Guide

## CONTENTS

- 2 - Limited product warranty
- 2 - Breville® recommends safety first
- 2 - Safety guidelines
- 4 - Components & Accessories
- 5 - Before first use - Care & Cleaning
- 6 - Gas canister placement
- 7 - Carbonating water
- 8 - Troubleshooting

## LIMITED PRODUCT WARRANTY

### 2 YEAR LIMITED

Breville's warranty for this product covers the repair or replacement if it is found to be defective due to faulty materials, workmanship, or function within the warranty period.

All legal warranty rights under applicable national legislation will be respected and will not be impaired by our warranty. For details on length of warranty, to obtain a printed copy or to read full terms and conditions visit [www.breville.com](http://www.breville.com).

Alternatively, call the Breville Service Centre (see back cover for contact details).

## BREVILLE® RECOMMENDS SAFETY FIRST

**At Breville® we are very safety conscious. We design and manufacture consumer products with the safety of you, our valued customer, foremost in mind. In addition, we ask that you exercise a degree of care when using any appliance and adhere to the following precautions.**

## SAFETY GUIDELINES



Keep clean and store the bottle with the lid off.



### WARNING



Never attempt to carbonate an empty bottle.



Never use a bottle that's deformed, discoloured, or scratched.



Never put the bottle in the freezer.










Don't transport the InFizz™ Aqua with the gas Canister installed.




Do not carbonate milk based products.



Do not put ice in the bottle.

-  Use InFizz™ Aqua compatible carbonating bottles **ONLY**.
-  Never clean the bottle in the dishwasher.
-  Do not leave the InFizz™ Aqua and/or the bottle in direct sunlight or too close to a window.
-  Do not place the InFizz™ Aqua next to a heat source.
-  Do not place the InFizz™ Aqua close to open flames of any sort.
-  Do not use the InFizz™ Aqua and/or the bottle in extreme temperatures.
-  Do not use the bottle after its expiration date.

 The symbol shown indicates that this appliance should not be disposed of in normal household waste. It should be taken to a local authority waste collection centre designated for this purpose or to a dealer providing this service. For more information, please contact your local council office.

### **CARBON DIOXIDE CO<sub>2</sub> Canister**

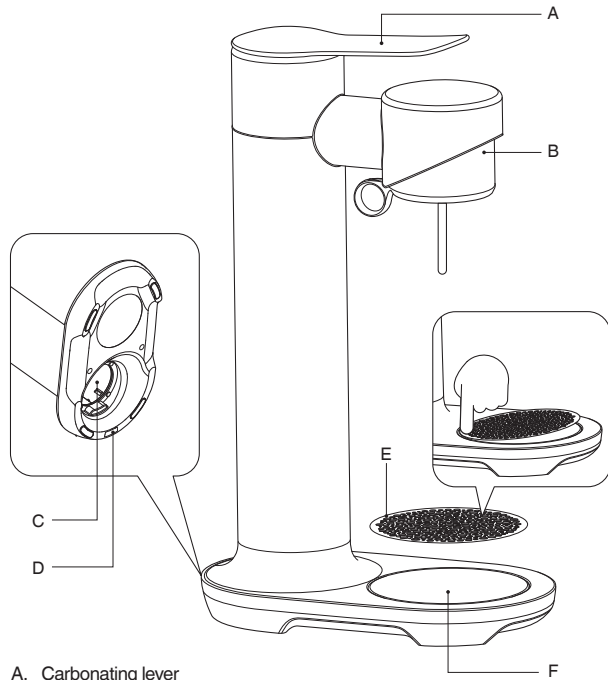
To reduce the risk of a CO<sub>2</sub> leak, personal injury and property damage:

- In the event of a CO<sub>2</sub> leak, ventilate the area, breathe fresh air and if feeling unwell seek immediate medical attention.
- Do not insert a CO<sub>2</sub> Canister into the InFizz™ Aqua when a bottle is installed.

- Do not remove a CO<sub>2</sub> Canister from the InFizz™ Aqua when it is being operated.
- Do not remove bottle during carbonation.
- Do not handle or remove a CO<sub>2</sub> Canister while it is discharging CO<sub>2</sub>.
- Do not use if damaged. Inspect the CO<sub>2</sub> Canister and CO<sub>2</sub> Canister valve prior to use for dents, punctures, or other damage. If damaged, contact an authorised service representative.
- Do not tamper with the CO<sub>2</sub> Canister in any way, including puncturing, incinerating or removing the valve.
- Do not expose the CO<sub>2</sub> Canister to heat above 120°F / 50°C. Protect from sunlight. Store in a well-ventilated area.

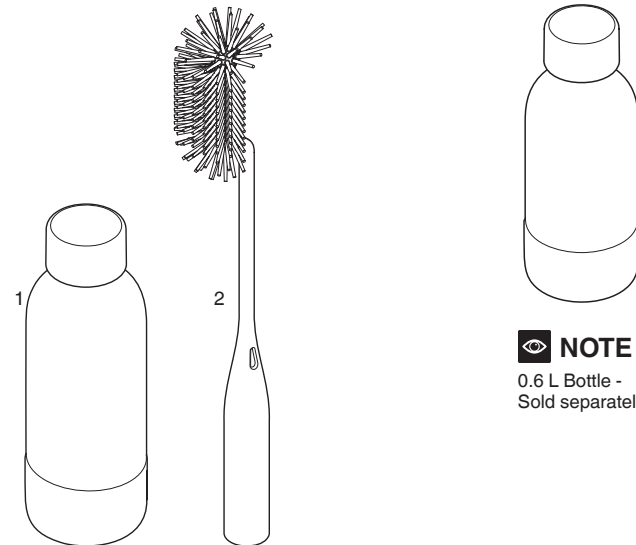
**SAVE THESE INSTRUCTIONS FOR HOUSEHOLD USE ONLY**

## COMPONENTS



- A. Carbonating lever
- B. Tilt head with ring pull
- C. Gas cylinder compartment
- D. Flat surface safety switch to ensure a flat surface is used.
- E. Removable drip tray cover (hand wash only)
- F. Drip tray

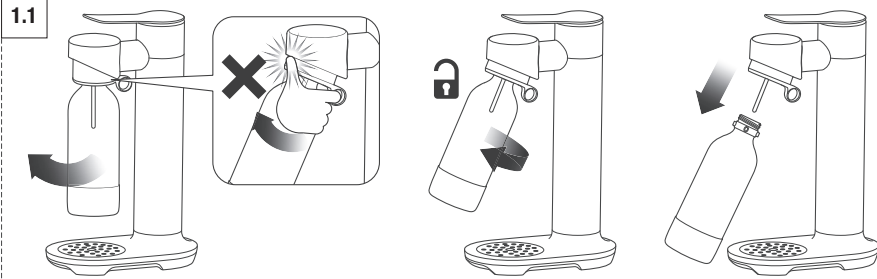
## ACCESSORIES

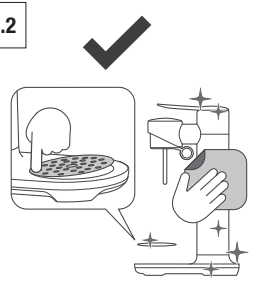



- 1. 1 L bottle (hand wash only)
- 2. Bottle brush

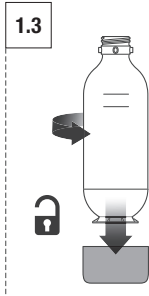
 **NOTE**  
0.6 L Bottle -  
Sold separately

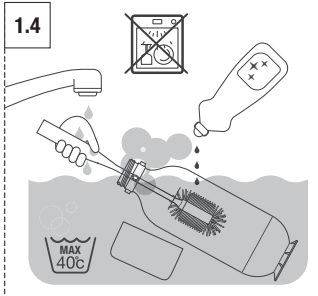
# 1. BEFORE FIRST USE CARE & CLEANING

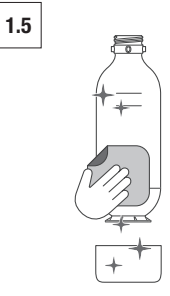
**1.1** 

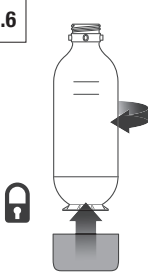
**1.2** 





**1.3** 

**1.4** 

**1.5** 

**1.6** 

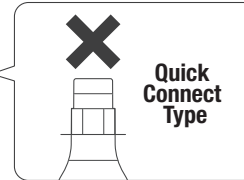
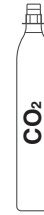
**1.7** 



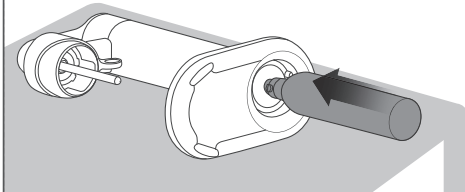
## 2.

### GAS CANISTER PLACEMENT

2.1

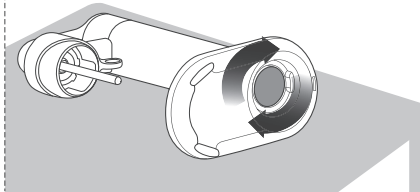


2.2



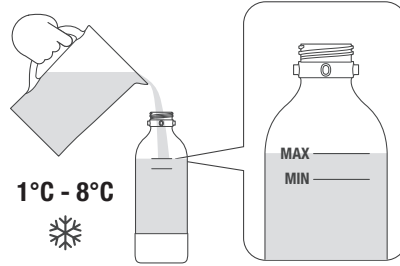
2.3

Gently turn the canister  
in a clockwise motion  
until screwed in.

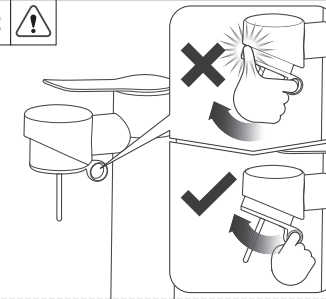


### 3. CARBONATING WATER

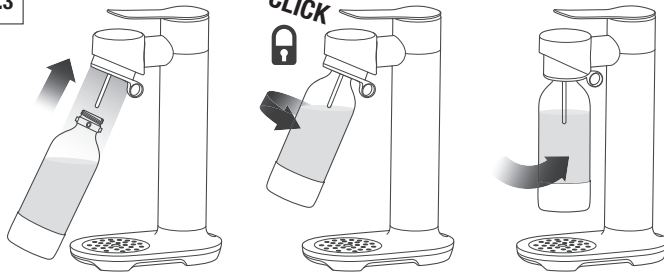
3.1



3.2

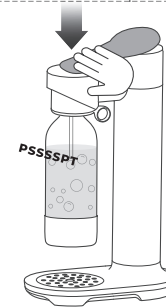


3.3

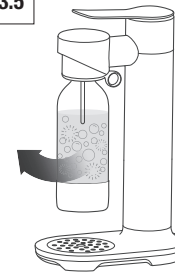


3.4

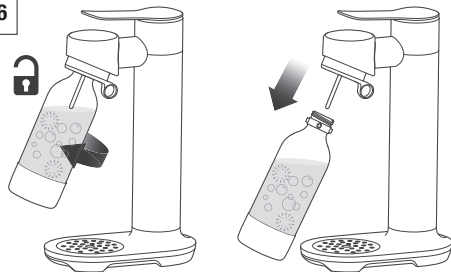
The longer or more times the lever is pressed, the greater the carbonation. A "popping" sound may be heard when ideal carbonation levels are reached.



3.5



3.6



## 4. TROUBLESHOOTING

PROBLEM	POSSIBLE CAUSES	EASY SOLUTIONS
<b>Small pieces of ice in the bottle.</b>	Small pieces of ice may appear and quickly melt in the bottle while carbonating.	<ul style="list-style-type: none"><li>• Shorten each press so the efficiency of carbonation is not affected.</li></ul>
<b>Little or no carbonation.</b>	CO <sub>2</sub> canister may be near empty or empty.  NOTE: Cold water also maximises carbonation.	<ul style="list-style-type: none"><li>• Replace the canister with a full one.</li><li>• Check the CO<sub>2</sub> canister is properly screwed into place.</li></ul>

5.



For more information on:  
• Cleaning • Troubleshooting  
• Useful Tips and Warranty  
Check out the website, visit [www.breville.com](http://www.breville.com)



**NOTES**

## NOTES

## NOTES

## **Breville Service Center**

### **Australian Customers**

**Phone:** 1300 139 798

**Web:** [www.breville.com](http://www.breville.com)

### **New Zealand Customers**

**Phone:** 0800 273 845

**Web:** [www.breville.com](http://www.breville.com)

# **Breville®**

Master Every Moment™

Breville, the Breville Logo, is a trademark of Breville Pty Ltd ("Breville") and Breville's products are distributed in Australia and New Zealand under license. Copyright Breville Pty. Ltd. 2023.

Due to continued product improvement, the products illustrated/photographed in this brochure may vary slightly from the actual product.